



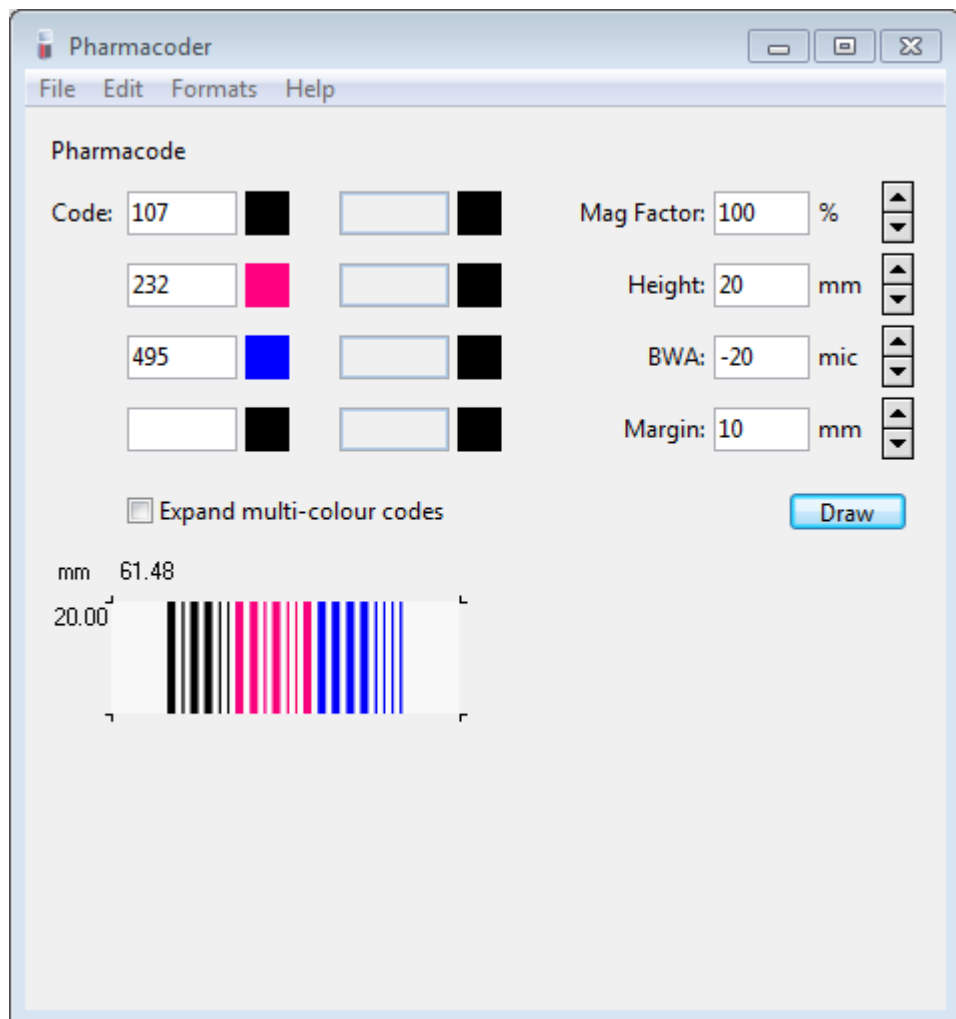
Pharmacoder

User Guide

Pharmacoder

Data Entry

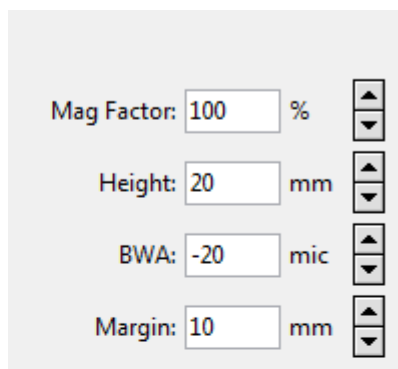
Pharmacoder generates Pharmacode barcodes in a variety of formats. You have access to 10 data entry fields and have complete control of the size and colour of the code.



To create a code, simply enter the code number in the first of the '**Code:**' fields and click on the '**Draw**' button. Pharmacoder will not permit you to enter invalid data. If you attempt to enter non-numeric characters or a number greater than 16382, the software will prevent it. If you check the "Expand multi-color codes" checkbox, the gap between colors will be 3x the narrow bar width instead of 2.

Scaling the code

Pharmacoder provides a number of controls for adjusting the size of your barcode. The primary control is the '**Mag Factor:**', which essentially governs the width of the code. The '**Height:**' control does what you would expect and the '**Margin:**' control governs the size of the light margin at either side of the barcode.



Mag Factor: 100 %

Height: 20 mm

BWA: -20 mic

Margin: 10 mm

The '**BWA:**' control is used to make small adjustments to the thickness of the bars in the code. This is used to compensate for the thickening effect that usually occurs when the barcode is printed. You will notice that the dimensions are microns rather than millimetres, (1mm = 1000µm).

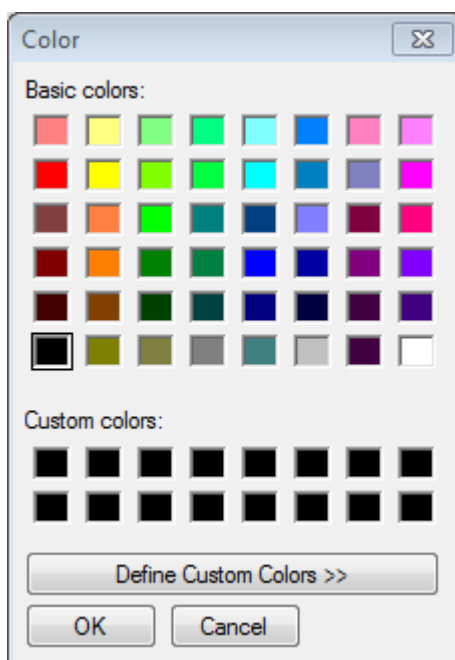
The upper & lower limits for each control are:

Setting	Lower	Upper
Mag Factor	50%	500%
Height	5mm	100mm
BWA	-100µm	250µm
Margin	5mm	30mm

You can use the arrow buttons to adjust these settings or you can key in the data. If you attempt to enter a value outside the limits, the software will default to the closest allowed value.

Setting the colour

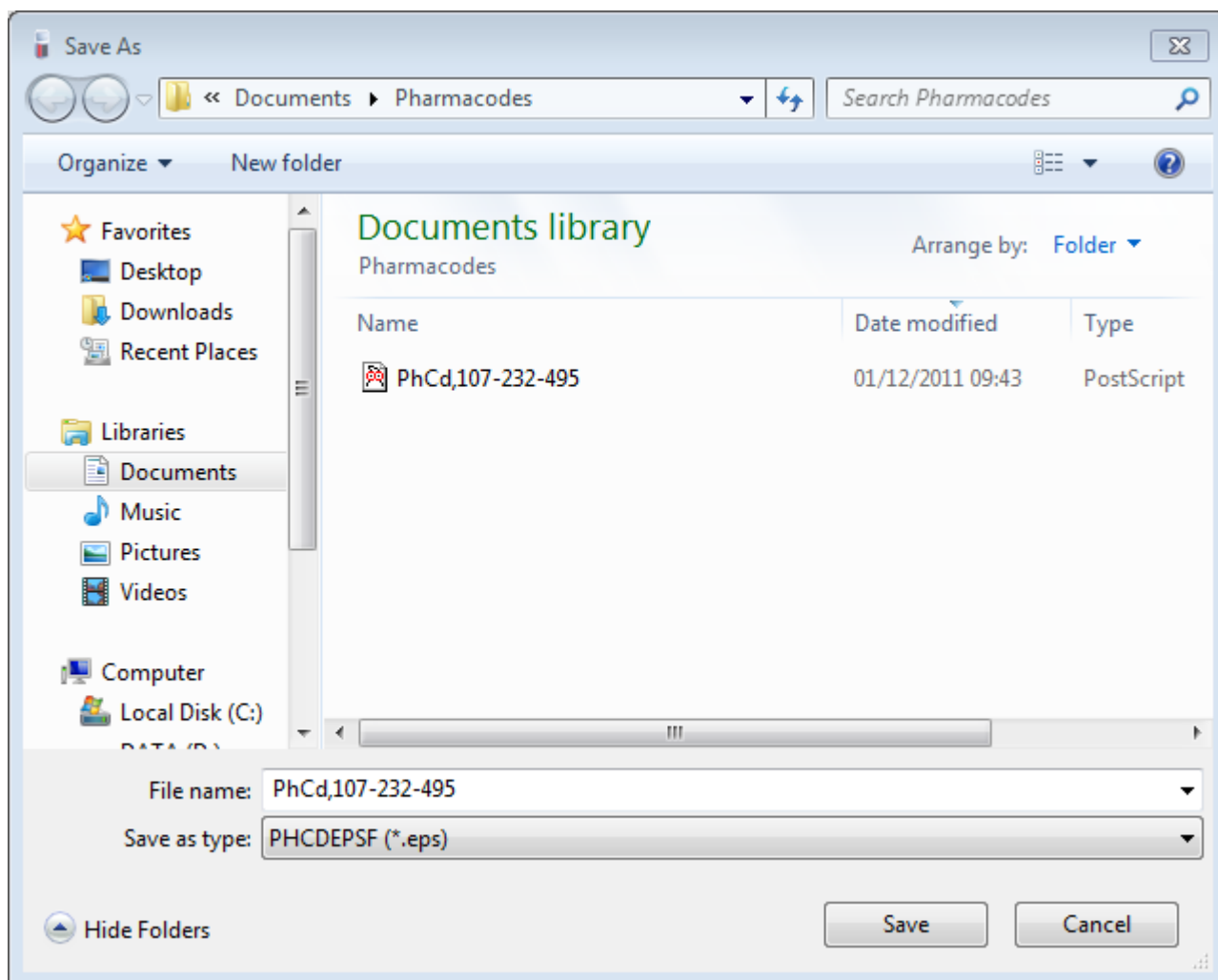
Pharmacoder allows access to the operating systems colour picker when specifying the colour for each section of the code. To specify a colour simply click on the black box to the right of the data entry field. You will be presented with the standard colour picker options, these will vary according to the OS that you are using.



You are able to specify the colour for each code section individually, the software will display the chosen colour in the barcode as soon as it is redrawn.

Saving the file

To save your barcode, select '**Save As...**' from the '**File**' menu. This will present you with the standard Save dialog. The software will provide a default name for the file based on the data that was entered, you are free to change this if you wish.



The file will be saved in the EPS format, you can then place/import this into a DTP package for incorporation into your artwork.

You can also print the code using the '**Print**' option from the '**File**' menu. This will print a low-res bitmap copy of the file.

Templates

If you have a number of standard formats which you will use routinely you can add them to the '**Formats**' menu. To do this, simply save your barcode into the '**Templates**' folder that sits inside the Pharmacoder Documents folder in your Documents directory.

Each time the application is launched it will search for these templates and add an entry for each one to the '**Formats**' menu, using the name of the saved file. If the '**Templates**' folder is empty or missing then the '**Formats**' menu will appear empty.